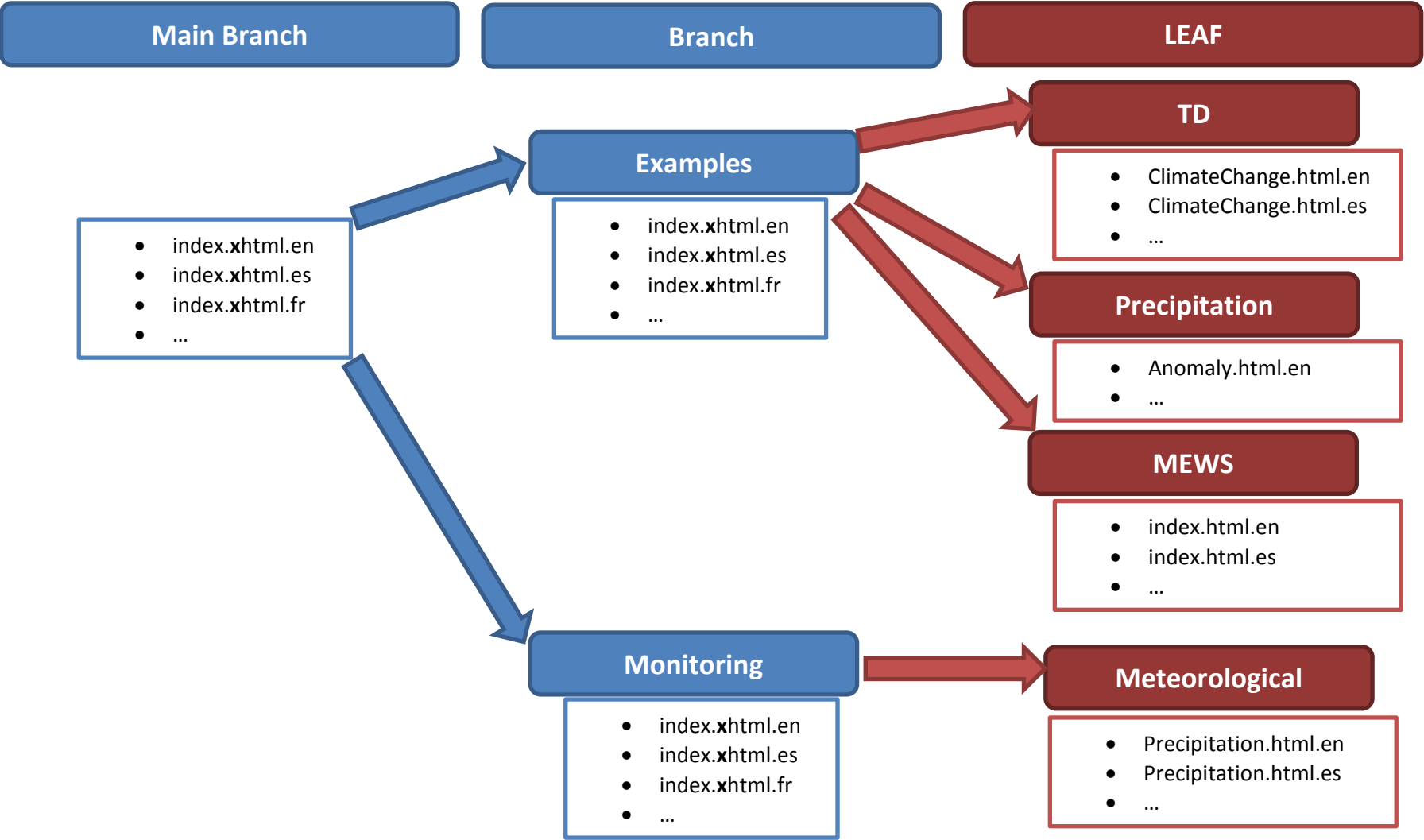


Manual for Chilean Data Library Management – Part 2

Contents

- The maproom structure 2
- Add a new map section to the maproom..... 3
 - Start with a clean maproom copy 3
 - Create the map structure 3
 - Add the index.html for the new folder (BRANCH) 4
 - Create the map you want to add (LEAF) 8
 - Start with a clean maproom copy 8
 - First duplicate an example map 8
 - Create the html file that represents the map 8

The maproom structure



Add a new map section to the maproom

Here we add a completely new maproom section 'Drought Monitor' to the test maproom.

Start with a clean maproom copy

Run the git clean command:

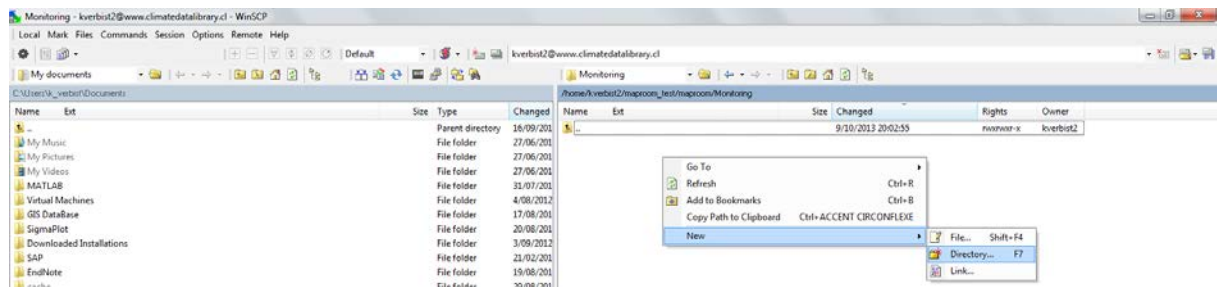
```
>git clean -f -x -d - maproom
```

This eliminates all files created by making a tarball.

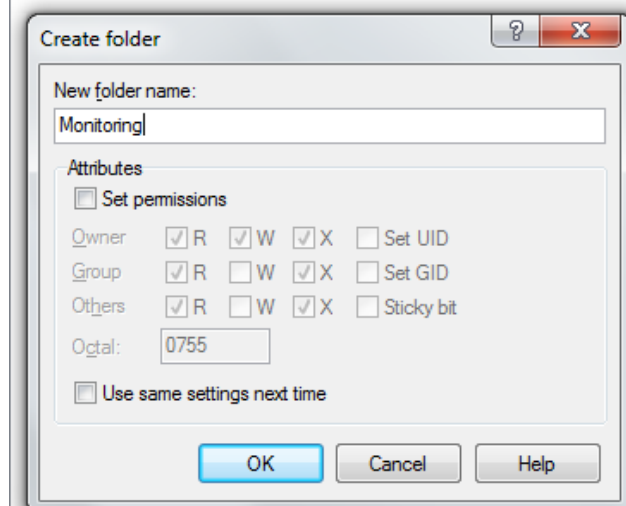
(Note: it also eliminates all NEW files that you added, so make sure you make a local copy first)

Create the map structure

First we need to add a new folder named 'Monitoring'



Name	Ext	Size	Changed	Rights	Owner
..			9/10/2013 19:15:02	rw-r--r--	kverbist2
Examples			9/10/2013 19:17:13	rw-rw-r--	kverbist2
index.xhtml.en		2,734	8/10/2013 23:51:08	rw-rw-r--	kverbist2



Inside this folder now create a new folder called 'Meteorological'

Name	Ext	Size	Changed	Rights	Owner
..			9/10/2013 20:02:55	rwxrwxr-x	kverbist2
Meteorological			9/10/2013 20:06:03	rwxrwxr-x	kverbist2

Add the index.html for the new folder (BRANCH)

Go to Examples/index.xhtml.en and select duplicate

Indicate the Monitoring folder as the target:

`/home/kverbist2/maproom_test/maproom/Monitoring/*.*`

Name	Ext	Size	Changed	Rights	Owner
..			9/10/2013 20:02:55	rwxrwxr-x	kverbist2
TD			8/10/2013 23:32:24	rwxrwxr-x	kverbist2
Precipitation			8/10/2013 23:32:24	rwxrwxr-x	kverbist2
MEWS			8/10/2013 23:32:24	rwxrwxr-x	kverbist2
index.xhtml.en		2,898	8/10/2013 23:32:24	rw-rw-r--	kverbist2

Duplicate

Target session:
kverbist2@www.climatedatalibrary.cl

Target remote directory:
/home/kverbist2/maproom_test/maproom/Monitoring/*.*

Duplicate via local temporary copy

OK Cancel Help

Go to the Monitoring maproom and open the index file.

```

/home/kverbist2/maproom_test/maproom/Monitoring/index.xhtml.en - kverbist2@www.climatedatalibrary.cl
<!DOCTYPE html PUBLIC "-//W3C//DTD XHTML 1.0 Transitional//EN" "http://iridl.ldeo.columbia.edu/ontolog:
<html xmlns="http://www.w3.org/1999/xhtml"
  xmlns:wms="http://www.opengis.net/wms#"
  xmlns:iridl="http://iridl.ldeo.columbia.edu/ontologies/iridl.owl#"
  xmlns:maproom="http://iridl.ldeo.columbia.edu/ontologies/maproom.owl#"
  xmlns:term="http://iridl.ldeo.columbia.edu/ontologies/iriterms.owl#"
  xmlns:xs="http://www.w3.org/2001/XMLSchema#"
  version="XHTML+RDFa 1.0"
  xml:lang="en">
<head>
<meta name="viewport" content="width=device-width; initial-scale=1.0;" />
<title>CEAZA Map Room</title>
<link rel="stylesheet" type="text/css" href="../../../uicore/uicore.css" />
<link class="altLanguage" rel="alternate" hreflang="es" href="index.html?Set-Language=es" />
<link class="altLanguage" rel="alternate" hreflang="fr" href="index.html?Set-Language=fr" />
<link rel="canonical" href="index.html" />
<meta property="maproom:Sort_Id" content="a04" />
<link rel="term:isDescribedBy" href="http://iridl.ldeo.columbia.edu/ontologies/iridl.owl#climate" />
<link rel="term:isDescribedBy"
href="http://iridl.ldeo.columbia.edu/ontologies/iridl.owl#forecast" />
1 → <link rel="term:icon"
href="http://iridl.ldeo.columbia.edu/SOURCES/.IRI/.Analyses/.CSMT/.Annual_Sum/X/Y/fig+colors+grey+ver:
<script type="text/javascript" src="../../../uicore/uicore.js"></script>
</head>
<body>

<form name="pageform" id="pageform">
<input class="carryLanguage carryup" name="Set-Language" type="hidden" />
</form>
<div class="controlBar">
  <fieldset class="navitem">
    <legend>Data Library</legend>
    <a rev="section" class="navlink carryup" href="/maproom/">Maproom</a>
  </fieldset>
  <fieldset class="navitem">
    <legend>Maproom</legend>
    2 → <span class="navtext">Examples</span>
  </fieldset>
</div>
<div>
3 → <div id="content" class="searchDescription">
4 → <h2 property="term:title">Examples</h2>
<p align="left" property="term:description">
Climate affects sectors in society in a number of ways. These effects may be
direct, as with heat stress, or indirect, as with infectious diseases
such as malaria and meningitis.</p><p>This facility aims to explore and
inform users about the climate-society relationship with an emphasis on
the seasonal nature of that relationship, where appropriate.
</p>
</div>
5 → <div class="rightcol tabbedentries" about="/maproom/Examples/" >
6 → <link rel="maproom:tabterm" href="http://iridl.ldeo.columbia.edu/ontologies/maproom.owl#Example" />
</div>

</div>
<div class="optionsBar">
  <fieldset class="navitem" id="share"><legend>Share</legend>
</fieldset>
</div>
</body>
</html>

```

1) Change icon link : copy paste the link below

http://www.climatedatalibrary.cl/expert/SOURCES/.Chile/.DGA/.meteorological/.Precipitation/a/.lon/a/.lat/a/.precip/a/precip_colors/DATA/0/100/RANGE/SOURCES/.Chile/.DMC/.Precipitation/a/.lon/a/.lat/a/.precip/a/

precip_colors/DATA/0/100/RANGE/fig:/scattercolor/scattercolor/black/verythin/countries_gaz/lightgrey/verythin/states_gaz/black/verythin/coasts:/fig:/bbox%5B-80/-55/-67/-17%5Dpsdef/%28antialias%29true/psdef/%28fntsze%2920/psdef//anomaly/-42.7/42.7/plotrange//lat/-54/-29/plotrange//T/637.5/plotvalue/+/T/643.5/plotvalue+/plotborder+72+psdef//plotaxislength+432+psdef+.gif

- 2) Change the Navigation text ('navtext') to 'Monitoring'.
- 3) Change the title to 'Drought Monitor'
- 4) Change the text section between <p> and </p> to describe the maps it represents:
 <p align="left" property="term:description"> A drought monitor showing relevant drought indicators. </p><p>The indicators were selected to show conditions with respect to meteorological, hydrological and agricultural drought.</p>
- 5) Change the folder 'Examples' to 'Monitoring'
- 6) Changed the 'tabterm' to reflect the underlying folder 'Meteorological':

```
<link rel="maproom:tabterm"
href="http://iridl.ldeo.columbia.edu/ontologies/maproom.owl#Monitoring_Meteorological_term" />
```

The final file then looks like this: (get the final file [here](#))

```
<!DOCTYPE html PUBLIC "-//W3C//DTD XHTML 1.0 Transitional//EN" "http://iridl.ldeo.columbia.edu/ontologies/xhtml1/DTD/xhtml1-transitional.dtd">
<html xmlns="http://www.w3.org/1999/xhtml"
  xmlns:wms="http://www.opengis.net/wms#"
  xmlns:iridl="http://iridl.ldeo.columbia.edu/ontologies/iridl.owl#"
  xmlns:maproom="http://iridl.ldeo.columbia.edu/ontologies/maproom.owl#"
  xmlns:term="http://iridl.ldeo.columbia.edu/ontologies/iriterms.owl#"
  xmlns:xs="http://www.w3.org/2001/XMLSchema#"
  version="XHTML+RDFa 1.0"
  xml:lang="en">
<head>
<meta name="viewport" content="width=device-width; initial-scale=1.0;" />
<title>CEAZA Map Room</title>
<link rel="stylesheet" type="text/css" href="../../uicore/uicore.css" />
<link class="altLanguage" rel="alternate" hreflang="es" href="index.html?Set-Language=es" />
<link class="altLanguage" rel="alternate" hreflang="fr" href="index.html?Set-Language=fr" />
<link rel="canonical" href="index.html" />
<meta property="maproom:Sort_Id" content="a04" />
<link rel="term:isDescribedBy" href="http://iridl.ldeo.columbia.edu/ontologies/iridl.owl#climate" />
<link rel="term:isDescribedBy"
href="http://iridl.ldeo.columbia.edu/ontologies/iridl.owl#forecast" />
<link rel="term:icon"
href="http://www.climatedatalibrary.cl/expert/SOURCES/.Chile/.DGA/.meteorological/.Precipitation/a/.lon/:a/.lat/:a/.precip/:a/precip_colors/
<script type="text/javascript" src="../../uicore/uicore.js"></script>
</head>
<body>

<form name="pageform" id="pageform">
<input class="carryLanguage carryup" name="Set-Language" type="hidden" />
</form>
<div class="controlBar">
  <fieldset class="navitem">
    <legend>Data Library</legend>
    <a rev="section" class="navlink carryup" href="/maproom/">Maproom</a>
  </fieldset>
  <fieldset class="navitem">
    <legend>Maproom</legend>
    <span class="navtext">Monitoring</span>
  </fieldset>
</div>
<div>
  <div id="content" class="searchDescription">
<h2 property="term:title">Drought Monitor</h2>
<p align="left" property="term:description"> A drought monitor showing relevant drought indicators. </p><p>The indicators were selected to show
</div>
<div class="rightcol tabbedentries" about="/maproom/Monitoring/" >
  <link rel="maproom:tabterm" href="http://iridl.ldeo.columbia.edu/ontologies/maproom.owl#Monitoring_Meteorological_term" />
</div>
|
</div>
<div class="optionsBar">
  <fieldset class="navitem" id="share"><legend>Share</legend>
```

Now save the file, go to the terminal and process the maproom (check previous chapter for details):

- 1) add the file : >git add *
- 2) commit the file: >git commit -a

Create the map you want to add (LEAF)

Now let's add a map to the Monitoring branch.

Start with a clean maproom copy

Run the git clean command:

```
>git clean -f -x -d - maproom
```

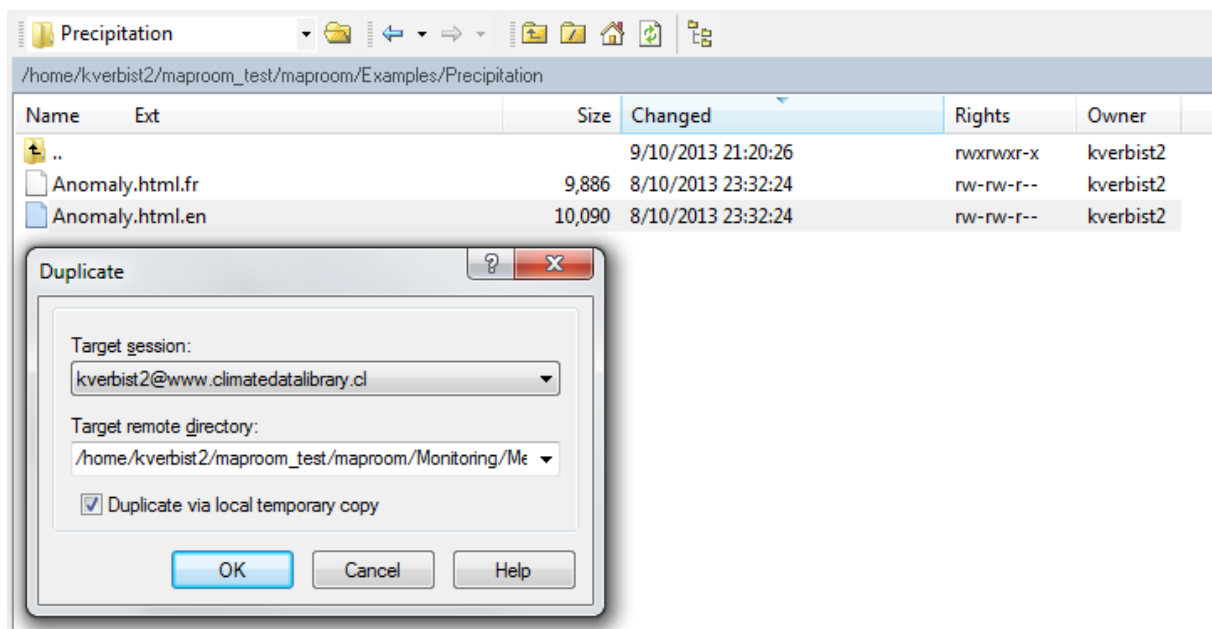
This eliminates all files created by making a tarball.

(Note: it also eliminates all NEW files that you added, so make sure you make a local copy first)

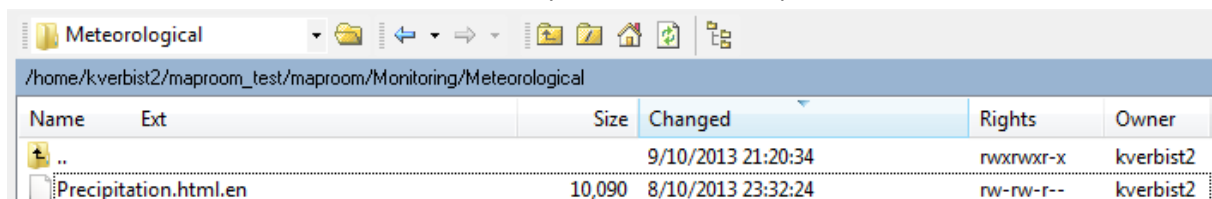
First duplicate an example map

Go to /Examples/Precipitation/ and duplicate the file Anomaly.html.en to the directory:

```
/home/kverbist2/maproom_test/maproom/Monitoring/Meteorological/*.*
```



Go to that folder and rename the file 'Anomay.html.en' to 'Precipitation.html.en'



Create the html file that represents the map

Open the file and change the following items:


```

/home/kverbist2/maproom_test/maproom/Monitoring/Meteorological/Precipitation.html.en - kverbist2@www.climatedatalibrary.cl
<!DOCTYPE HTML PUBLIC "-//W3C//DTD HTML 4.01 Transitional//EN" "http://iridl.ldeo.columbia.edu/ontologies/xhtml1/DTD/xhtml1-transitional.dtd">
<html xmlns="http://www.w3.org/1999/xhtml"
      xmlns:wms="http://www.opengis.net/wms#"
      xmlns:iridl="http://iridl.ldeo.columbia.edu/ontologies/iridl.owl#"
      xmlns:maproom="http://iridl.ldeo.columbia.edu/ontologies/maproom.owl#"
      xmlns:term="http://iridl.ldeo.columbia.edu/ontologies/iriterms.owl#"
      xmlns:xs="http://www.w3.org/2001/XMLSchema#"
      version="XHTML+RDFa 1.0"
  >
<head>
<meta name="viewport" content="width=device-width; initial-scale=1.0;" />
1 <meta xml:lang="" property="maproom:Entry_Id" content="Examples_Precipitation" />
2 <title>Monthly Precipitation Anomaly</title>
3 <link rel="stylesheet" type="text/css" href="../../uicore/uicore.css" />
4 <link class="altLanguage" rel="alternate" hreflang="fr" href="Anomaly.html?Set-Language=fr" />
5 <link class="share" rel="canonical" href="Anomaly.html" />
6 <meta xml:lang="" property="maproom:Entry_Id" content="Global_Precipitation_Anomaly" />
<link rel="term:isDescribedBy" href="http://iridl.ldeo.columbia.edu/ontologies/maproom.owl#Example"/>
<link rel="term:isDescribedBy" href="http://iridl.ldeo.columbia.edu/ontologies/iridl.owl#climate" />
<link rel="term:isDescribedBy" href="http://iridl.ldeo.columbia.edu/ontologies/maproom.owl#Global_term" />
<link rel="term:isDescribedBy" href="http://iridl.ldeo.columbia.edu/ontologies/maproom.owl#maproom_term" />
<link rel="term:isDescribedBy" href="http://iridl.ldeo.columbia.edu/ontologies/iridl.owl#Precipitation" />
<link rel="term:isDescribedBy" href="http://iridl.ldeo.columbia.edu/ontologies/iridl.owl#Rate" />
<link rel="term:isDescribedBy" href="http://iridl.ldeo.columbia.edu/ontologies/iridl.owl#Atmosphere" />
<link rel="term:isDescribedBy" href="http://iridl.ldeo.columbia.edu/ontologies/iridl.owl#Global" />
<link rel="term:isDescribedBy" href="http://iridl.ldeo.columbia.edu/ontologies/maproom.owl#Global_Precipitation_term" />
<link rel="term:isDescribedBy" href="http://iridl.ldeo.columbia.edu/ontologies/iridl.owl#precipitation_rate" />
<link rel="term:isDescribedBy" href="http://iridl.ldeo.columbia.edu/ontologies/iridl.owl#monthly" />
<link rel="term:isDescribedBy" href="http://iridl.ldeo.columbia.edu/ontologies/iridl.owl#anomaly" />
7 <link rel="term:isDescribedBy" href="http://iridl.ldeo.columbia.edu/ontologies/iridl.owl#Gridded" />
<link rel="term:icon" href="http://iridl.ldeo.columbia.edu/SOURCES/.NOAA/.NCEP/.CPC/.CAMS_OPI/.v0208/.anomaly/.prcp/T/$28days$20since$201960-01-01/"
  <script type="text/javascript" src="../../uicore/uicore.js"></script>
</head>
<body xml:lang="en">
<form name="pageform" id="pageform" class="carryup carry dling dlauximg share">
<input class="carryup carry " name="Set-Language" type="hidden" />
<input class="carry dling share" name="bbox" type="hidden" />
<input class="dling share" name="T" type="hidden" />
<input class="dling dlauximg" name="plotaxislength" type="hidden" />
</form>
<div class="controlBar">
  <fieldset class="navitem" id="toSectionList">
    <legend>Maproom</legend>
    <a rev="section" class="navlink carryup" href="/maproom/Examples/">Examples</a>
  </fieldset>
  <fieldset class="navitem" id="chooseSection">
    <legend about="http://iridl.ldeo.columbia.edu/ontologies/maproom.owl#Example"><span property="term:label">Examples</span></legend>
  </fieldset>
  <fieldset class="navitem" id="chooseRegion">
    <legend>Region</legend>
  </fieldset>
</div>

```

- 1
- 2
- 3
- 4
- 5
- 6
- 7
- 8
- 9

- 1) Change 'Examples_Precipitation' to 'Monitoring_Meteorological'
- 2) Change 'Monthly Precipitation Anomaly' to 'Observed Precipitation'
- 3) Change 'Anomaly' to 'Precipitation'
- 4) Change 'Anomaly' to 'Precipitation'
- 5) Change 'Global Precipitation Anomaly' to 'Precipitation'
- 6) Change 'Example' to 'Monitoring'
- 7) Change icon image to the same image of the previous part:

http://www.climatedatalibrary.cl/expert/SOURCES/Chile/DGA/meteorological/Precipitation/a/.lon:/a/.lat:/a/.precip:/a/precip_colors/DATA/0/100/RANGE/SOURCES/Chile/DMC/Precipitation/a/.lon:/a/.lat:/a/.precip:/a/precip_colors/DATA/0/100/RANGE/fig/scattercolor/scattercolor/black/verythin/countries_gaz/lightgrey/verythin/states_gaz/black/verythin/coasts/fig/bbox%5B-80/-55/-67/-17%5Dpsdef/%28antialias%29true/psdef/%28fntsize%2920/psdef/anomaly/-42.7/42.7/plotrange//lat/-54/-29/plotrange/T/637.5/plotvalue/+/T/643.5/plotvalue//plotborder+72+psdef/plotaxislength+432+psdef+.gif
- 8) Change /Examples/ to /Monitoring/ AND change >Examples< to >Monitoring<
- 9) Change 'Example' to 'Monitoring_Meteorological_term' AND change >Examples< to > Meteorological Drought<

http://www.climatedatalibrary.cl/expert/%28Anomaly%29//var/parameter/%28Observed%29eq/%7BSOURCES/.Chile/.DGA/.meteorological/.Precipitation/a/.lon/:a/.lat/:a/.precip/:a/precip_colors/DATA/0/100/RANGE/SOURCES/.Chile/.DMC/.Precipitation/a/.lon/:a/.lat/:a/.precip/:a/precip_colors/DATA/0/100/RANGE/fig:/scattercolor/scattercolor/black/verythin/countries_gaz/lightgrey/verythin/states_gaz/black/verythin/coasts/:fig//bbox%5B-80/-55/-67/-17%5Dpsdef/%28antialias%29true/psdef/%28fntsize%2920/psdef%7Dif//var/get_parameter/%28Anomaly%29eq/%7BSOURCES/.Chile/.DMC/.Precipitation_anomaly/a/.lon/:a/.lat/:a/.anomaly/:a/prcp_anomaly/DATA/-100/100/RANGE/SOURCES/.Chile/.DGA/.meteorological/.Precipitation_anomaly/a/.lon/:a/.lat/:a/.anomaly/:a/prcp_anomaly/DATA/-100/100/RANGE/fig:/scattercolor/scattercolor/black/verythin/countries_gaz/lightgrey/verythin/states_gaz/black/verythin/coasts/:fig//bbox%5B-80/-55/-67/-17%5Dpsdef/%28antialias%29true/psdef/%28fntsize%2920/psdef%7Dif/++auxfig+/anomaly/-42.7/42.7/plotrange//lat/-54/-29/plotrange//anomaly/-42.7/42.7/plotrange//T/last/plotvalue//XOVY+null+psdef//plotaxislength+432+psdef//plotborder+72+psdef+.gif

- 5) Change 'Monthly Precipitation Anomaly' to 'Observed Precipitation'
- 6) Change text to


```
<p align="left" property="term:description">This map shows current and historical precipitation for Chile.</p><p align="left"> Precipitation stations are those reported by the Chilean Water Authority (DGA) and the Chilean Meteorological Service (DMC).</p>
```
- 7) Change 'Monthly Precipitation Anomaly' to 'Observed Precipitation'
- 8) Change to


```
<dt>Data</dt><dd>Observed Precipitation at DGA measuring stations</dd>
<dt>Data Source</dt><dd>DGA Water Authority, <a href="http://www.dga.cl/">DGA</a></dd>
```
- 9) Change to


```
<a href="http://www.climatedatalibrary.cl/SOURCES/.Chile/.DGA/.meteorological/.Precipitation/">A
ccess the DGA dataset used to create this map.</a>
```
- 10) Change everything between "" to


```
mailto:help@iri.columbia.edu?subject=Observed Precipitation
```

You can get a copy of the adjusted file [here](#).

Now save the file, go to the terminal and process the maproom (check previous chapter for details)

You should now see the maproom completed:



Drought Monitor

A drought monitor showing relevant drought indicators.

The indicators were selected to show conditions with respect to meteorological, hydrological and agricultural drought.

Meteorological Drought

Meteorological Drought

Observed Precipitation

This map shows current and historical precipitation for Chile.

