



UNIVERSIDAD NACIONAL MAYOR DE
SAN MARCOS
(Universidad del Perú, Decana de América)

APLIACIÓN DEL SIMGEN EN LA CUENCA CHANCAY - LAMBAYEQUE (NORTE DEL PERU)

L. A. Metzger T.¹

W. M. Leyva M.²

¹ Servicio Nacional de Meteorología e Hidrología del Perú

² Universidad Nacional Mayor de San Marcos

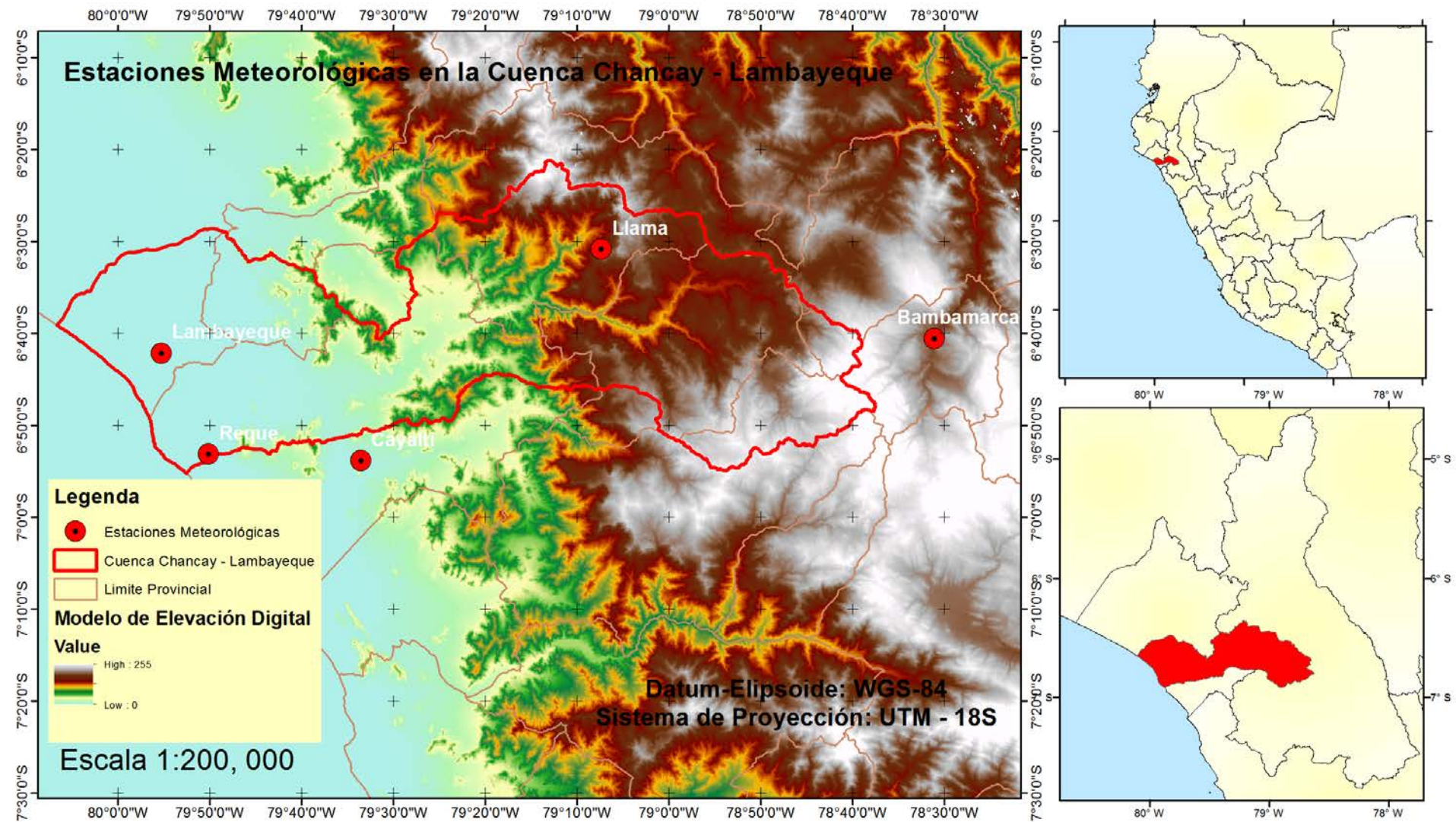


Figura. Distribución de las Estaciones Meteorológicas utilizadas para el modelo SimGEN.

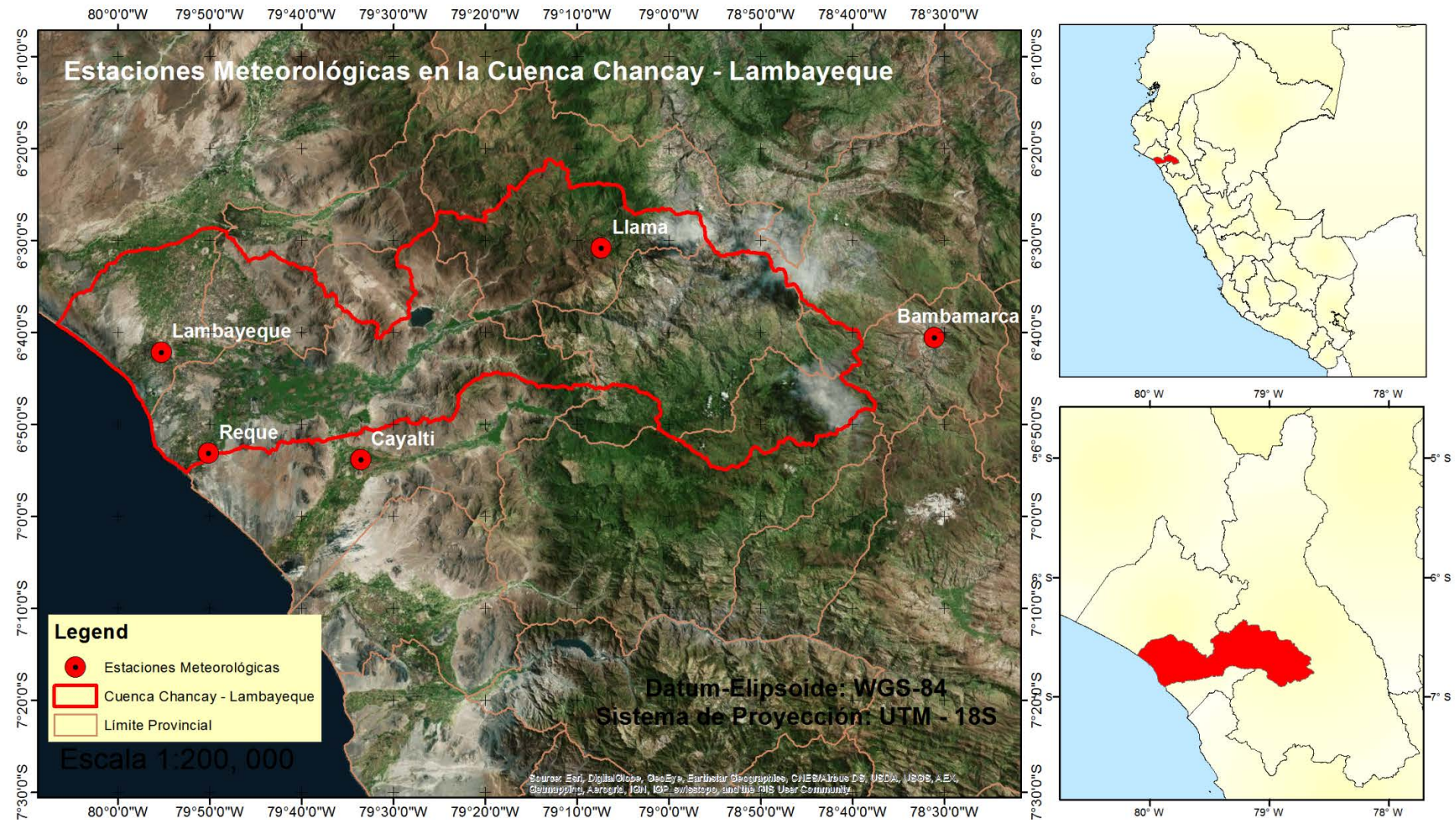
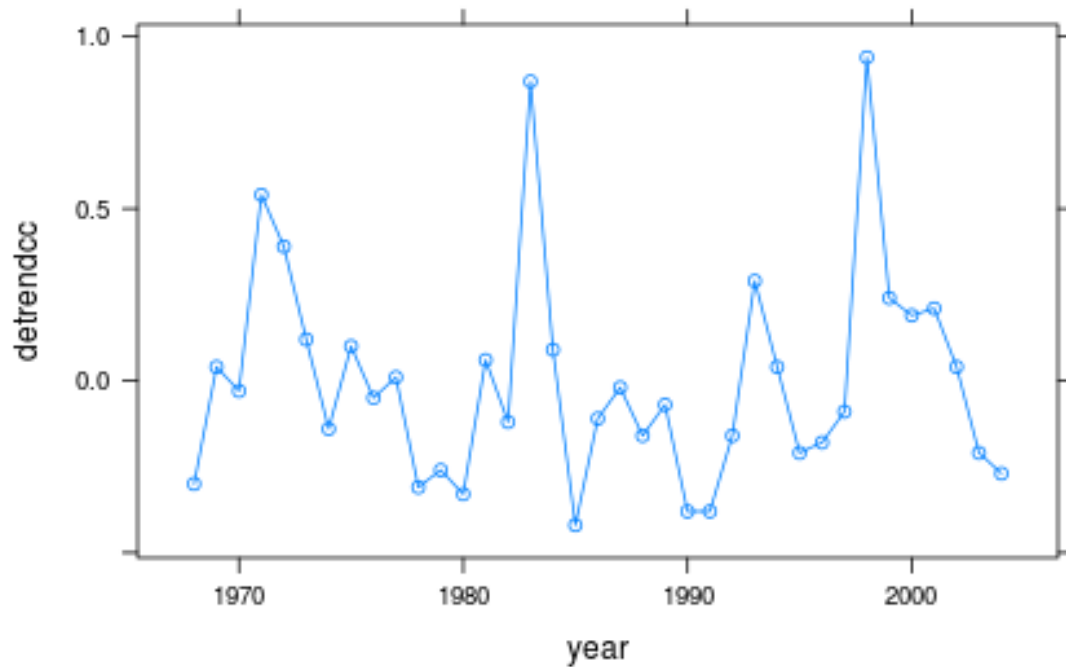
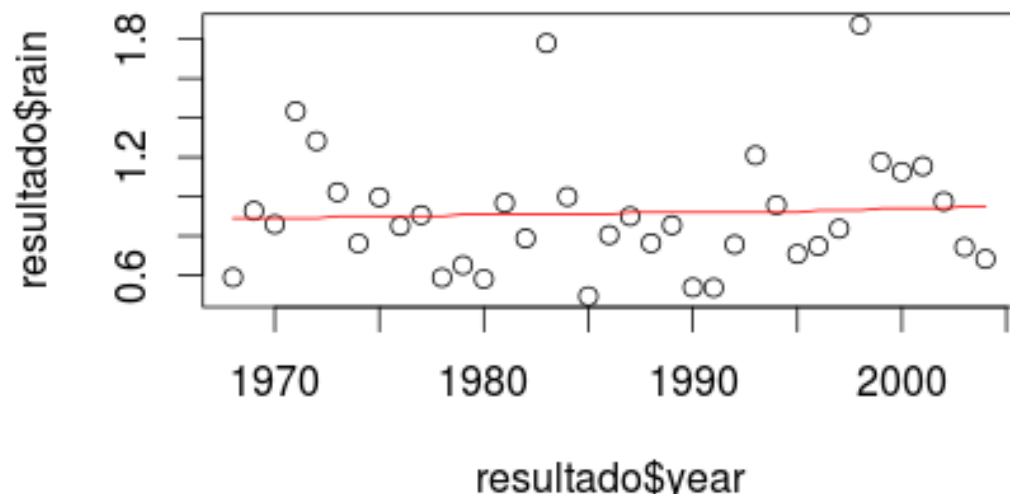
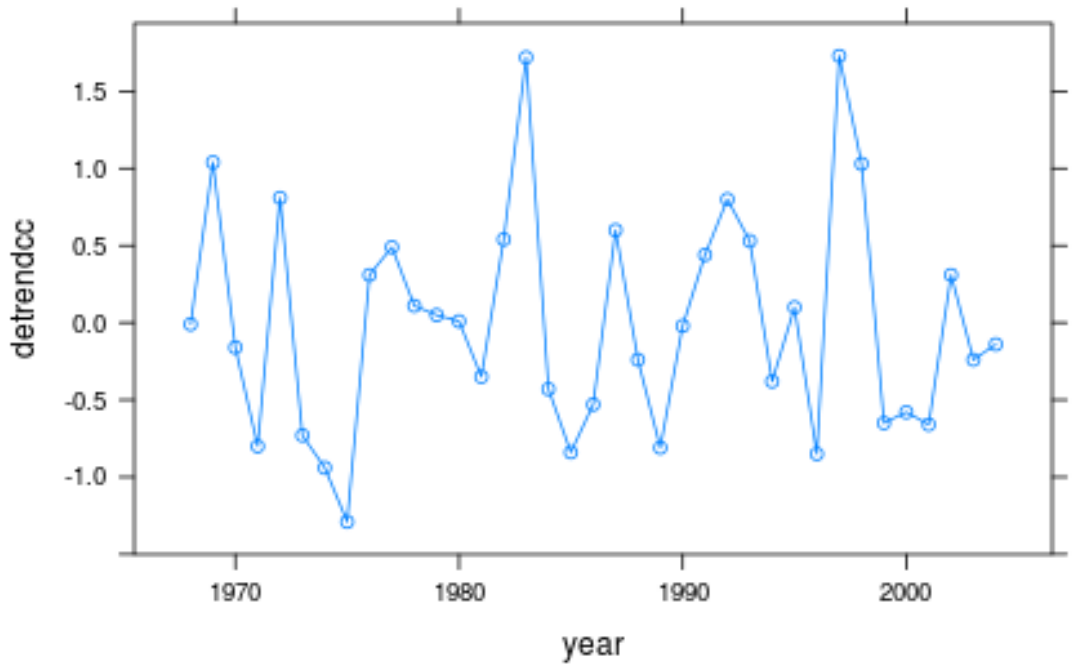
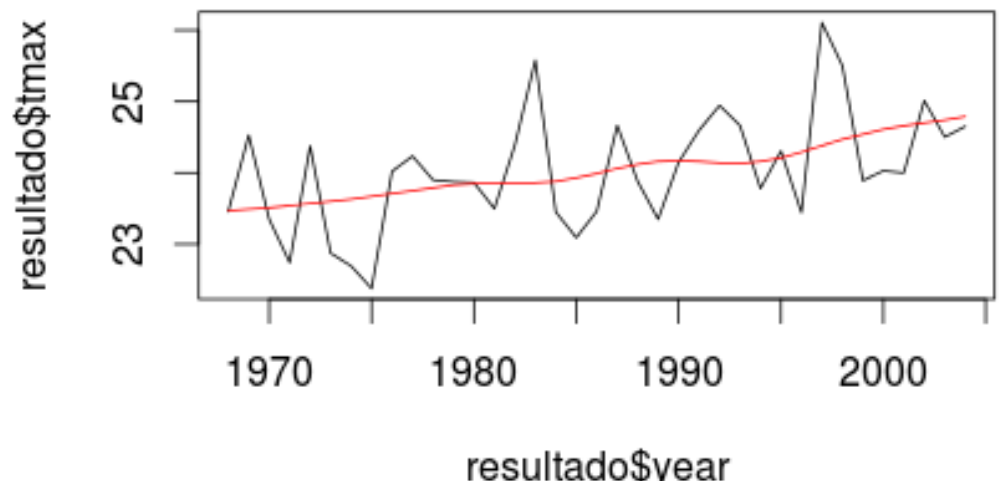
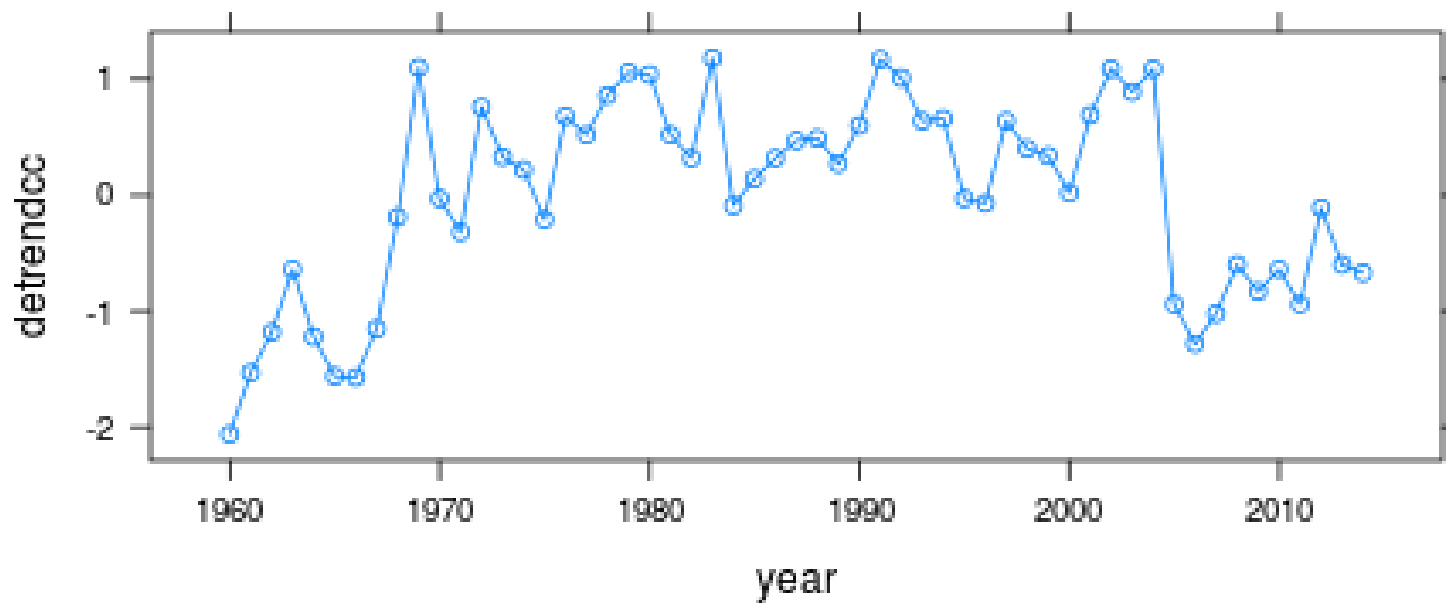
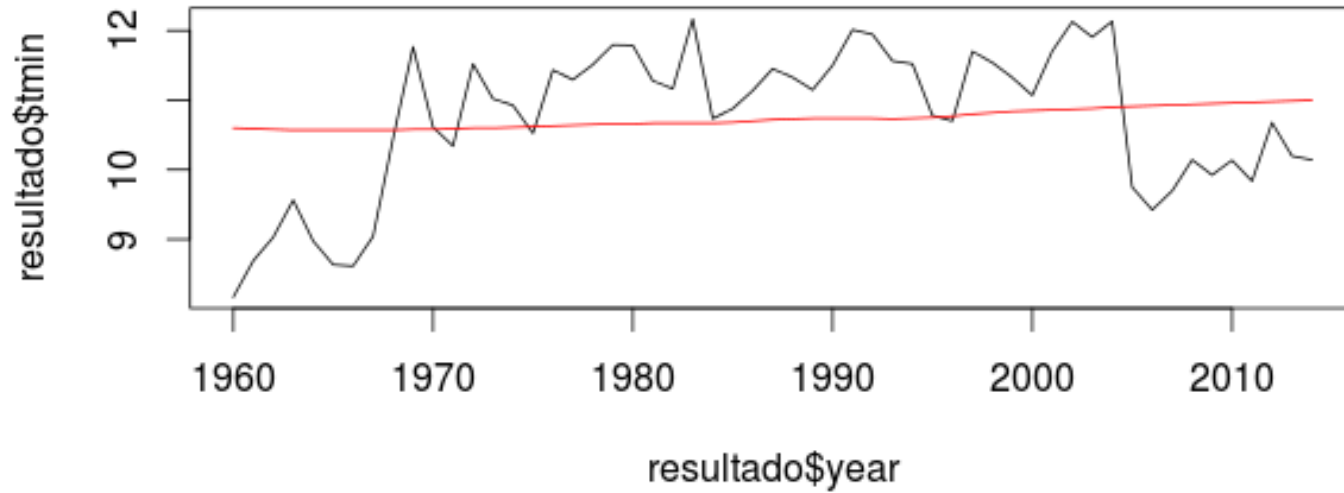


Figura. Distribución de las Estaciones Meteorológicas utilizadas para el modelo SimGEN.







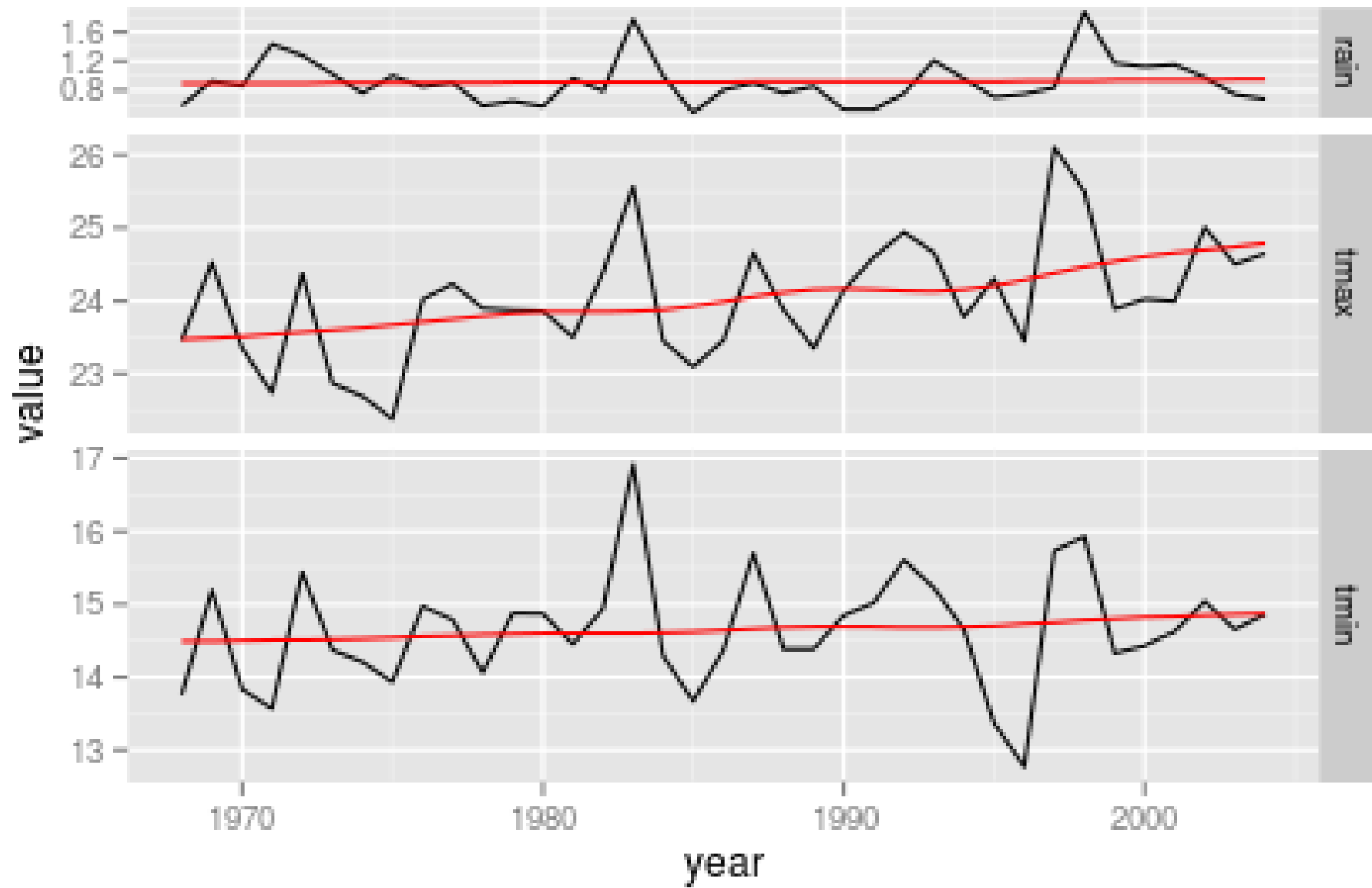
Correlaciones entre sus estaciones y los modelos CMIP5

```
> cor(detrended)
```

```
      rain      tmax      tmin  
rain 1.0000000 -0.49464722 0.63657583  
tmax -0.4946472 1.00000000 -0.08996304  
tmin 0.6365758 -0.08996304 1.00000000
```

```
> cor(long.seq$output[])
```

```
      Rain      Tmax      Tmin  
Rain 1.0000000 -0.49808866 0.64379784  
Tmax -0.4980887 1.00000000 -0.09938985  
Tmin 0.6437978 -0.09938985 1.00000000
```



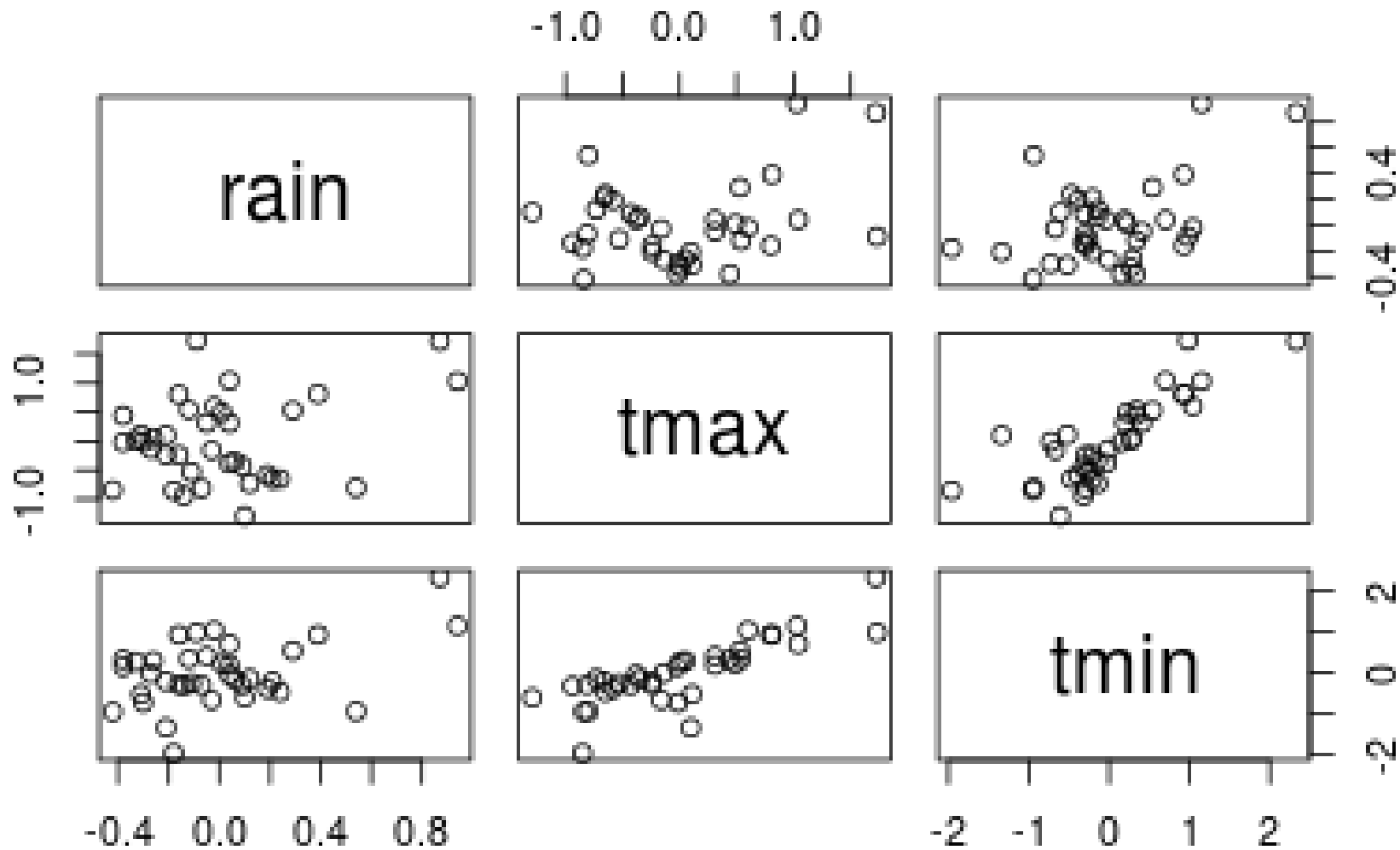


Figura. correlaciones entre precip, tmax, tmin

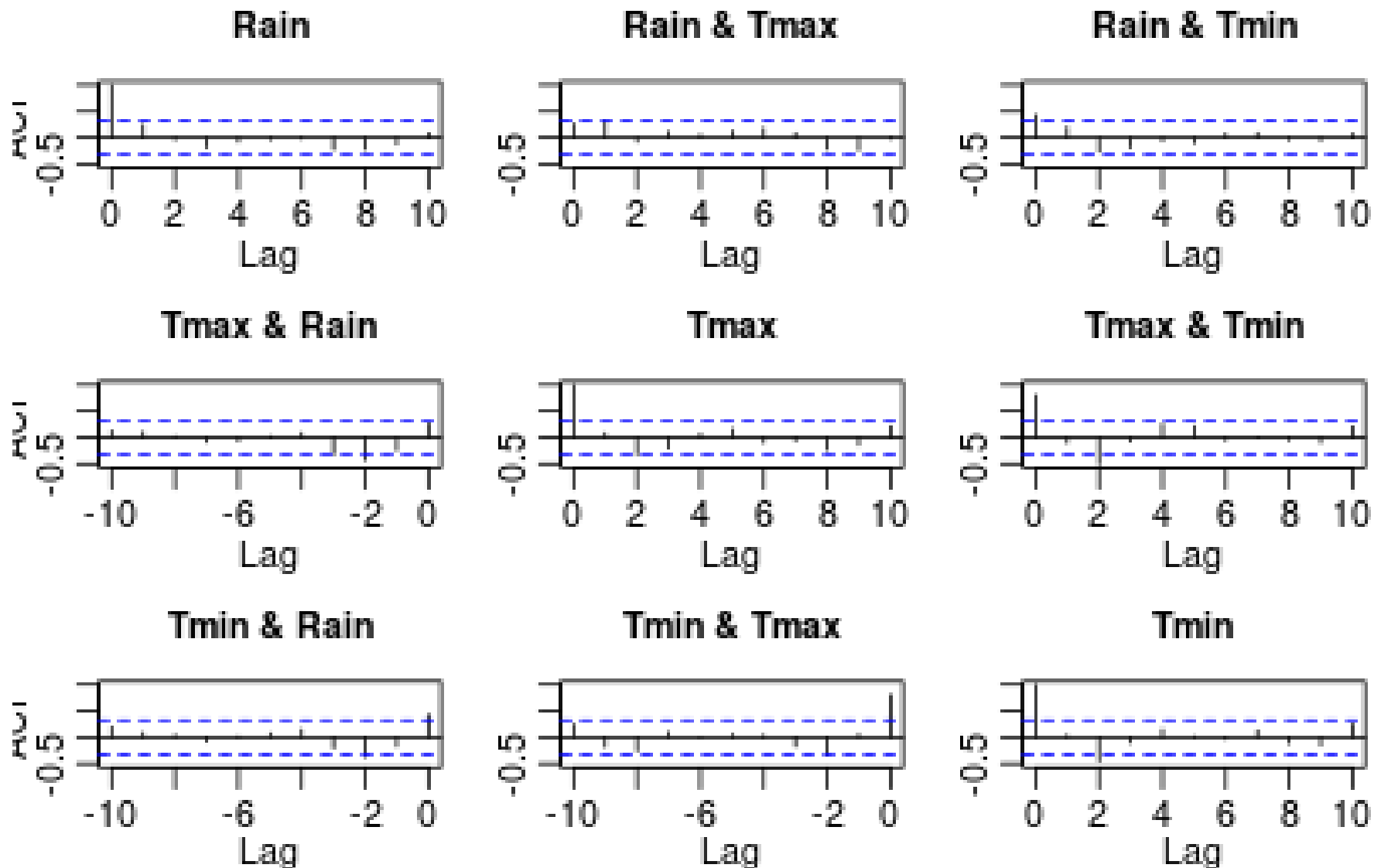


Figura. Correlaciones entre precip, tmax, tmin

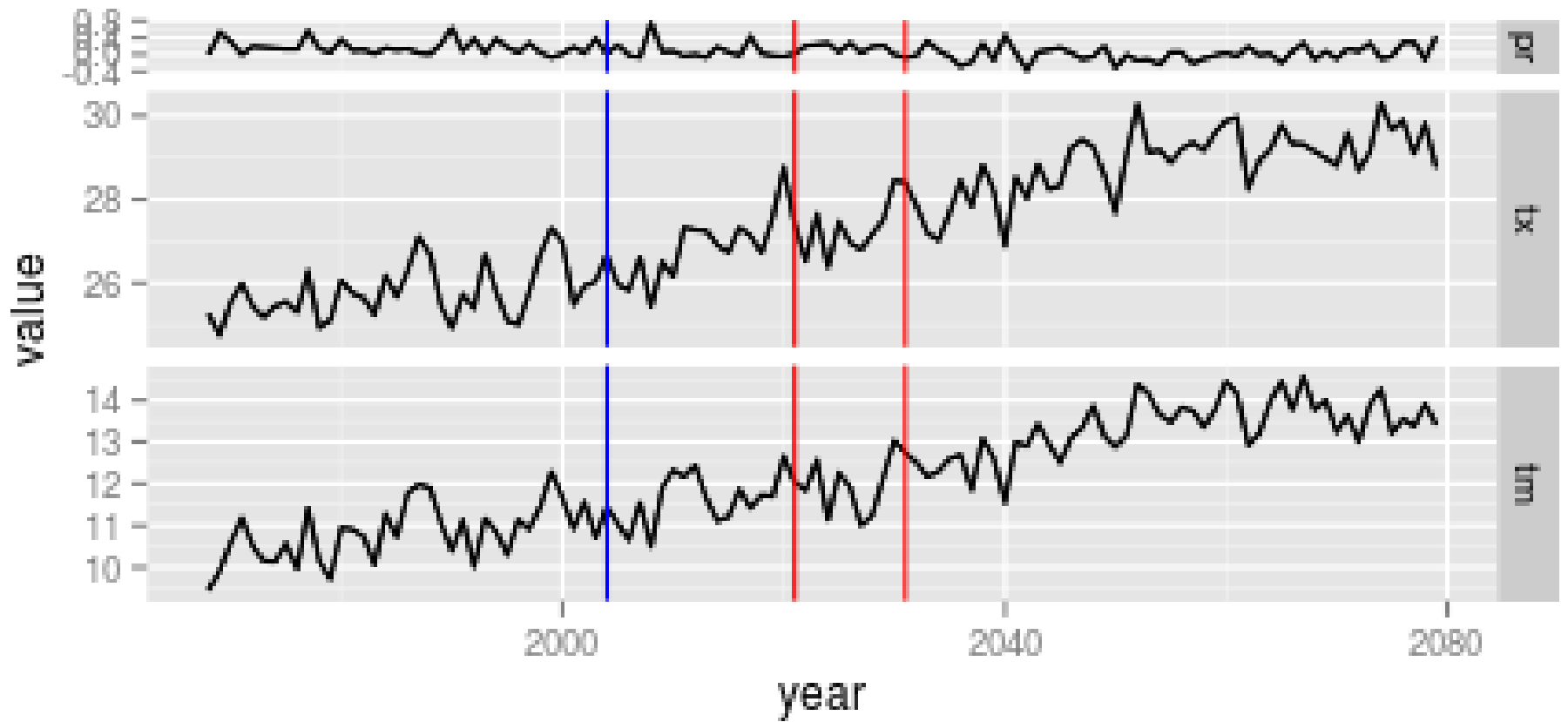


Figura. Resultados de la corrida de SimGEN